



Dark

furniture
fittings
solutions

furniture
fittings
solutions

Index

- 04 Kitchen and accessories
- 24 Home and accessories
- 39 Handles
- 46 Sliding systems

Vertex exterior drawer



Prof. Depth	Cod.			
450	31699	12	35	1
500	31700	12	35	1

Steel

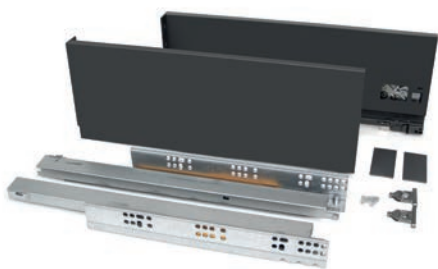
Vertex exterior drawer



Prof. Depth	Cod.			
300	31702	12	35	1
350	31703	12	35	1
400	31704	12	35	1
450	31705	12	35	1
500	31706	12	35	1
550	31707	12	35	1

Steel

Vertex exterior drawer



Prof. Depth	Cod.			
300	31709	12	35	1
350	31710	12	35	1
400	31711	12	35	1
450	31712	12	35	1
500	31713	12	35	1

Steel

Vertex exterior drawer



Prof. Depth	Cod.			
350	31716	12	35	1
400	31717	12	35	1
450	31718	12	35	1
500	31719	12	35	1

Steel





Concept exterior drawer



Depth	Cod.			
270	31000	12	35	1
300	31001	12	35	1
350	31002	12	35	1
400	31003	12	35	1
450	31004	12	35	1
500	31005	12	35	1

Steel

Concept exterior drawer



Depth	Cod.			
270	31006	12	35	1
300	31007	12	35	1
350	31008	12	35	1
400	31009	12	35	1
450	31010	12	35	1
500	31011	12	35	1

Steel

Concept exterior drawer



Depth	Cod.			
350	31014	12	35	1
400	31015	12	35	1
450	31016	12	35	1
500	31017	12	35	1

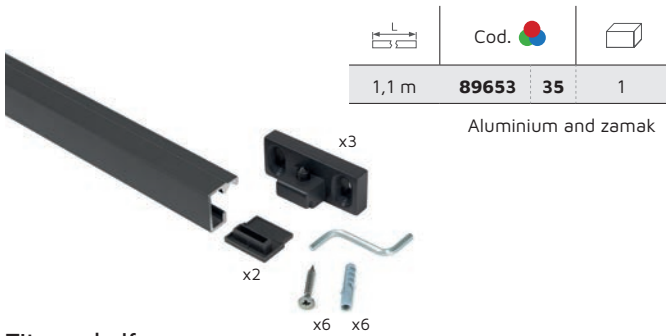
Steel

Titane

KITCHEN



Titane profile and accessories for hanging



Titane shelf



Titane shelf for spices jars



Titane roll holders



Titane knife holders



Titane cutlery holder



Titane tablet stand

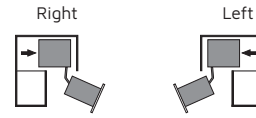


Titane hanging hooks





Titane Corner pull-out systems



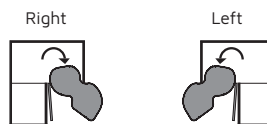
Cod.		
89443	35	1
Steel and particle board		

Titane Auxiliary skate



Module	x	Cod.		
150	104	83590	35	1
200	154	83600	35	1
Steel				

Titane Huit corner pull-out systems (2 trays set)



Description	Cod.		
Right	89441	35	1
Left	89442	35	1
Steel and particle board			

Titane Column



Modulo Module	Cod.		
400	89451	35	1
Steel and particle board			

Plasline

PLINTHS AND
accessories



Plasline plinth



H		Cod.					
100	2,35 m	80604	12	23	63	69	15
100	3,9 m	80601	12	-	63	-	10
120	2,35 m	80606	12	-	63	-	15
120	3,9 m	80602	-	-	63	-	10
150	2,35 m	80605	12	23	63	69	15
150	3,9 m	80603	12	-	63	-	10
165	2,35 m	89367	-	-	63	-	15
165	3,9 m	80610	-	-	63	-	10
180	2,35 m	89366	-	-	63	-	15
180	3,9 m	89130	-	-	63	-	10

Plastic

Plasline flexible angles



H	Cod.					
100	80116	23	63	69	20	
120	80135	-	63	-	20	
150	80156	23	63	69	20	
165	89194	-	63	-	20	
180	89131	-	63	-	20	

Plastic

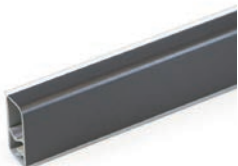
Plasline 90° angles



H	Cod.						
100	89101	12	-	23	63	69	20
120	89102	-	15	23	63	-	20
150	89103	12	-	23	63	69	20
165	89104	-	-	-	63	-	20
180	89105	-	-	-	63	-	20

Plastic

Miniline rectangular trim



	Cod.			
2,35 m	89365	23	63	10

Plastic

Miniline rectangular trim accessories



Cod.			
89226	21	23	20

Plastic

Gola - Upper profile



L	Cod.	12	35	60	62	69	
2,35 m	81621	12	35	60	62	69	8
3,9 m	89000	12	35	60	62	69	8

Aluminium

Gola - Central profile



L	Cod.	12	35	60	62	69	
2,35 m	81620	12	35	60	62	69	6
3,9 m	89001	-	-	-	62	-	6

Aluminium

Gola - Lateral profile



L	Cod.	12	35	60	62	69	
2,35 m	81626	12	35	60	62	69	6

Aluminium

Gola - Central profile





L	Cod.	12	35	60	62	69	
2,35 m	81625	12	35	60	62	69	6

Aluminium

Gola angle upper profile



Description	Cod.	35	62	69	
	89011	35	62	69	1
	89013	35	62	69	1

Aluminium

Gola- Upper profile accessories



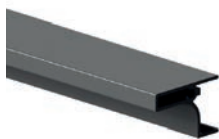
Cod.					
89008	15	21	23	37	10
Plastic					

Gola - Central profile accessories



Cod.					
89009	15	21	23	37	10
Plastic					

Gola Top pressure



		Cod.					
16	2,35 m	81622	12	35	62	69	8
19	2,35 m	81624	12	35	62	69	8
Aluminium							

Gola top for fitting



		Cod.					
18	2,35 m	81623	35	62	69	8	
Aluminium							

Profile Gola for oven



	Cod.				
580 mm	89024	35	62	69	5
Aluminium					



emuca 

Base for manual lid



	Cavità Cavities	A	P	Cod.	
450	1	336 - 386	414 - 482	81965 23	1
450	2	307 - 386	435 - 482	81966 23	1
500	1	336 - 436	414 - 482	81967 23	1
500	2	307 - 436	435 - 482	81968 23	1
600	2	486 - 536	414 - 482	81969 23	1
700	2	585 - 636	414 - 482	81970 23	1
800	3	650 - 736	414 - 482	81971 23	1
900	3	768 - 836	414 - 482	81972 23	1
1.000	3	885 - 936	414 - 482	81973 23	1
1.200	4	1.085 - 1.136	414 - 482	81974 23	1

Plastic

Bin set 216 mm height



	L TOTAL	12L	6L	Cod.	
450 / 500	12	1 ud	-	81975 23	1
450 / 500 / 600 / 700	24	2 uds	-	81976 23	1
450 / 500	12	-	2 uds	81977 23	1
450 / 500 / 600 / 700	24	1 ud	2 uds	81978 23	1
800 / 900 / 1.000	36	2 uds	2 uds	81979 23	1
1.200	48	3 uds	2 uds	81980 23	1

Plastic

Bin set 266mm height








	L TOTAL	15L	7L	Cod.	
450 / 500	15	1 ud	-	81981 23	1
450 / 500 / 600 / 700	30	2 uds	-	81982 23	1
450 / 500	14	-	2 uds	81983 23	1
450 / 500 / 600 / 700	29	1 ud	2 uds	81984 23	1
800 / 900 / 1.000	44	2 uds	2 uds	81985 23	1
1.200	59	3 uds	2 uds	81986 23	1

Plastic

1 bin 15 litres



			Cod. 	
450	15	1 uds	81991	23
Plastic				



Recycle 1 bin 20 litres



min.	L TOTAL	20L	Cod.	
300	20	1 ud	81993	23

Plastic

Recycle 2 bins 20 litres



min.	L TOTAL	20L	Cod.	
400	40	2 ud	81994	23

Plastic

Recycle 2 bins 15 litres

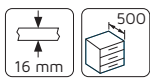
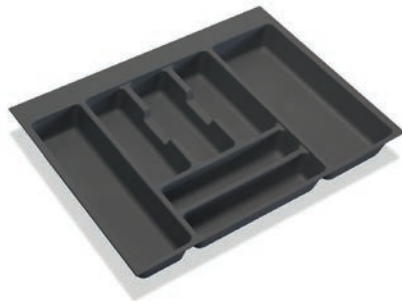


min.	L TOTAL	15L	Cod.	
400	30	2 ud	81995	23

Plastic



Cutlery trays



Modul	A	P	Cod.			
300	222	473	83268	15	-	10
350	272	473	83269	15	-	10
400	322	473	83258	15	23	20
450	372	473	83259	15	23	20
500	422	473	83260	15	23	20
600	522	473	83261	15	23	20
700	622	473	83262	15	23	10
800	722	473	83263	15	23	10
900	822	473	83264	15	23	10
1.000	922	473	83265	15	23	10
1.200	1.122	473	83266	15	23	10

Plastic

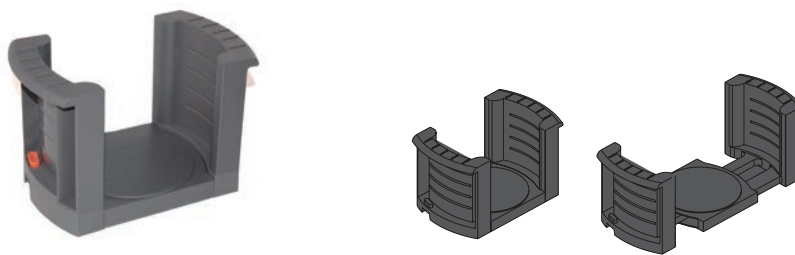
Dishes rack



Cod.		
89385	23	1

Plastic

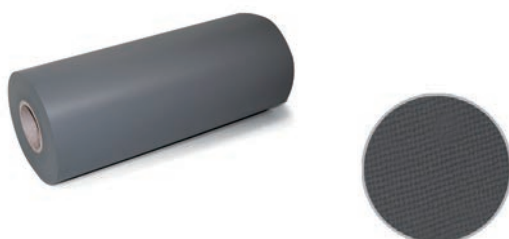
Plate holder



Cod.		
80177	21	1

Plastic

Textile effect non-slip mat



	Cod.				
20 m	89113	15	21	23	1

Plastic





Ø48 leveller



H	Cod.		
17	20038	17	400
26	80668	17	200
45	81668	17	200

Steel and plastic

M6 leveller



Cod.		
30808	17	24
30794	17	1.000

Steel and plastic

Twin wheel with plate fixing



Description	Ø	H	C x B	d x e	E	Load	Cod.		
without brake	30	44	30x30	20x20	4,5	15 kg	30364	17	400
without brake	40	55	38x38	25x25	5,5	25 kg	30366	17	200
without brake	45	59	38x38	25x25	5,5	25 kg	30367	17	200
without brake	50	65	38x38	25x25	5,5	30 kg	30368	17	200
with brake	40	55	38x38	25x25	5,5	25 kg	30372	17	200
with brake	50	65	38x38	25x25	5,5	30 kg	30374	17	200

Steel and plastic

Twin wheel with stud mounted



Description	Ø	H	A	Load	Cod.		
without brake	40	51,5	40	25 kg	30378	17	200

Steel and plastic

Twin wheel with press fit



Description	Ø	H	A	Portata Load	Cod.		
without brake	45	57	42	40 kg	30355	17	200
without brake	50	63	44	45 kg	30356	17	200

Steel and plastic

Table leg - Stay 6



STAY 6	Cod.			
Base / Base	32407	14	25	1
Colonna / Column	32405	14	25	1

Steel

Decorative feet - Smartfeet 1



H	Cod.				
100 - 110	20060	11	12	14	20
140 - 150	20061	11	12	14	16

Plastic

Decorative feet - Central Smartfeet 1



H	Cod.				
100 - 110	20062	11	12	14	16
140 - 150	20063	11	12	14	12

Plastic

Decorative feet - Smartfeet 2



Cod.			
20064	11	14	20

Plastic



Full overlay hinge



Description	Cod.		
Screw-on	10400	52	200

Steel

Half overlay hinge



Description	Cod.		
Screw-on	10402	52	200

Steel

Insert hinge



Description	Cod.		
Screw-on	10404	52	200

Steel

Screw-on plate with eccentric regulation



Height	Cod.		
0	10415	52	200
2	10416	52	200

Steel

Steel cover plate



Cod.			
10448	52		1000

Steel

Steel cover plate



Cod.			
10449	52		1.000

Steel





Agile



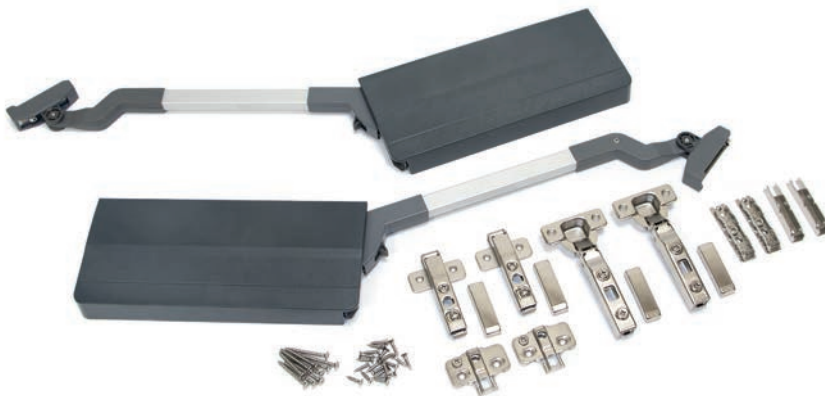
Description	F	Cod.			
LOW	580 - 1.250	12130	15	23	1
MEDIUM	960 - 2.040	12131	15	23	1
HIGH	1.800 - 3.500	12132	15	23	1
EXTRA HIGH	3.200 - 9.000	12135	15	23	1

Steel and plastic

LOW MEDIUM HIGH		16-28 mm	250-500 mm	max. 1.200 mm
EXTRA HIGH		16-28 mm	400-700 mm	max. 1.800 mm

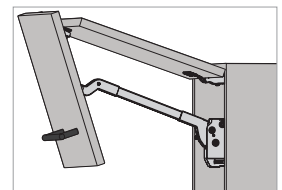


Agile Flap



Model	KH (mm)	P (kg)	Cod.		
H59 M	590 - 649	7,8 - 13	12139	23	1
H65 L	650 - 729	3,7 - 7,2	12140	23	1
H65 M	650 - 729	7 - 11,6	12141	23	1

Steel




	590-729 mm	max. 1.800 mm
--	------------	---------------

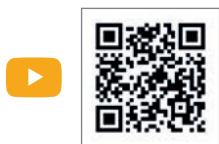


Sling wardrobe pull down rail



A	Cod.				
450 - 600	70300	11	15	52	1
600 - 830	70301	11	15	52	1
830 - 1.150	70302	11	15	52	1

Steel and plastic





Evo shelf support



Ø	Cod.			
5	40079	07	53	1.000
3	40100	07	-	1.000

Plastic and zamak

Portofino shelf support



Cod.			
81940	07	53	500

Plastic and zamak

Sekure shelf support



Ø	Cod.					
3	40087	15	-	21	23	250
5	40088	15	16	21	23	250

Steel and plastic

Cable organizer Plaswire 85



Cod.				
50125	11	12	14	15

Plastic

Cable organizer Plaswire 152





Cod.				
50126	11	12	14	10

Plastic

Multiconnector Vertikal Push 100





Cod. 			
50482	14	1	1

Steel and plastic

Chargers Airtop wireless charger





Input	Output		Cod. 		
100 - 240V AC	USB	5V DC - 2,1A	50175	17	1
	Qi	5V DC - 700 mA			

Plastic

Sekure shelf support



Model	Cod. 			
UK	50295	14	25	1
EU	50296	14	25	1

Steel, plastic and zamak

Switch



Cod. 				
96381	15	17	21	100

Tecnoplastica / Plastic

Door switch



Cod. 				
96424	15	17	10	10

Tecnoplastica / Plastic

Switch

MULTICONECTOR

Lighting



Spot Crux-in-Q



Lumen	WATT	Colour	LEDs	Cod.					
101 lm	1,8 W	4.000 K	24	52039	12	14	25	51	6

Plastic

Spot Mizar



Ø	A	Lumen	WATT	Colour	LEDs	Cod.					
55	66	200 lm	3 W	4.000 K	24	50401	14	25	51	6	
78	84	380 lm	5,2 W	4.000 K	71	50402	14	25	51	6	

Steel and plastic

Flexible Kuma



Lumen	WATT	Colour	LEDs	Cod.					
285 lm	5 W	4.000 K	24	50294	15	17		4	

Plastic

Flexible Kuma



Lumen	WATT	Colour	LEDs	Cod.					
150 lm	2,1 W	4.000 K	16	50293	15	17		4	



Plastic





Tulip 1





L	Cod. 				
62	69202	35	-	62	20
94	69203	35	-	62	20
126	69204	35	-	62	20
158	69205	35	60	62	20

Aluminium

Tulip 2





L	Cod. 				
62	69206	35	-	62	20
94	69207	35	-	62	20
126	69208	35	-	62	20
158	69209	35	60	62	20

Aluminium

Kobe





L	C	H	E	Cod. 			
110	96	26,7	14	93560	51	52	20
142	128	29,2	15,4	93561	51	52	20
174	160	30,5	16,5	93562	51	52	20

Zamak

Kyoto





L	C	H	E	Cod. 			
110	96	25,5	20	93557	51	52	25
142	128	25,5	21	93558	51	52	25
174	160	25,5	22,5	93559	51	52	25

Zamak

Nagoya





L	C	Cod. 			
80	64	93556	51	52	10

Zamak

Mali





Cod. 			
93470	08	14	50

Zamak

Marrakech





L	C	Cod. 			
77	64	93489	08	14	20

Zamak

Bremen



L	C	Cod. 				
64	32	93553	62	67	69	25
128	96	93554	62	67	69	25
160	128	93555	62	67	69	25


Aluminium





Stockholm




L	C	Cod.				
150	128	90066	11	14	25	25

ABS

Malmö




L	C	Cod.				
167	96	90065	11	14	25	25

ABS

Assen




L	C	Cod.				
164	128	90067	11	14	25	25
196	160	90068	11	14	25	25

ABS

Hanover




L	C	Cod.				
149	128	90069	11	14	25	25

ABS

Minsk



L	C	Cod.				
89	64	90064	14	25		50

ABS

Copenhagen



L	C	Cod.				
220	160	90082	13	14	25	25

ABS

Kaunas



L	C	Cod.				
120	64	90081	13	14	25	50

ABS

Halle



L	C	Cod.				
178	128	90084	13	14	25	25

ABS

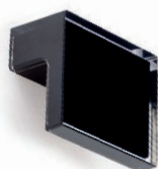
Hamburg



L	C	Cod.				
205	160	90086	15	17	10	10

PC

Kiev





L	C	Cod.				
45	32	90071	15	17	50	50

PC

Stockholm





Ø	C	Cod. 			
98	64	90085	13	14	25

ABS

Malmo





L	C	Cod. 		
65	32	90088	17	25

ABS

Assen



L	C	Cod. 			
78	64	90089	17	25	25

ABS

Placard74

This system is designed for furniture with two or three doors, and is able to support a maximum weight of 50 kg for door.

The design of the profiles means you can combine wood and glass in the same door.



furniture fittings solutions

**Emuca S.R.L**

Via Messico, 80 • 35127 Padova (ITALIA)
T. +39 049 8702800 • F. +39 049 87 03019
www.emuca.it • info@emuca.com

Emuca Ltd.

75 Springfield Road • Chelmsford • Essex • CM2 6JG (UK)
T. +44 1268 530 674 • F. +44 1268 282 592
www.emuca.co.uk • sales@emuca.com

Emuca S.A.

Pl. El Oliveral - c/H, 4 • Apartado de correos 176
46394 Ribà-Roja del Túria • Valencia (ESPAÑA)
T. +34 96 166 70 19 • F. +34 96 166 71 82
www.emuca.es • emuca@emuca.com

Emuca S.A.R.L

Parc de l'Aubinière • 2 Avenue des Améthystes
44338 Nantes Cedex 03 (FRANCE)
T. +33 2 49 88 07 35 • F. +33 2 72 22 02 24
www.emuca.fr • emuca@emuca.com

Emuca Lda.

AV. da Liberdade n° 38, 4° • 1250-145 Lisboa (PORTUGAL)
T. +351 211 203 940 • F. +34 96 166 71 82
www.emuca.pt • emuca@emuca.com

06/2020

